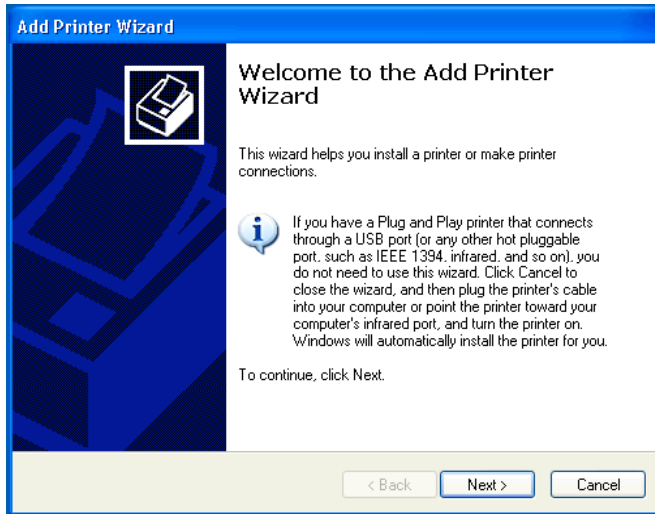


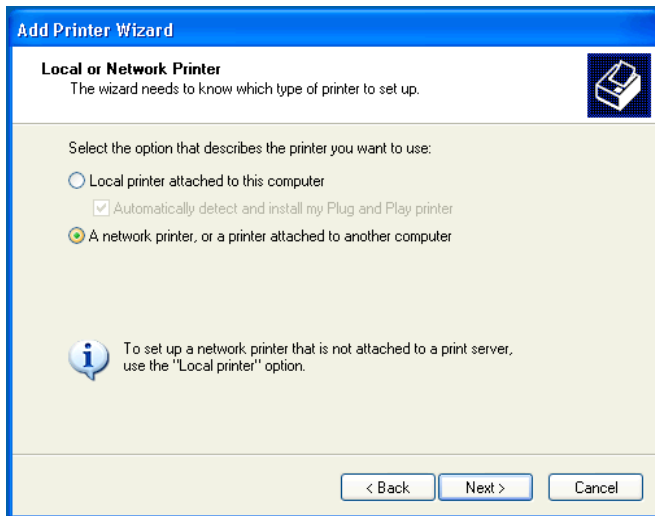
# Math-IT HOW-TO: Setting up Windows XP to print on Math Dept Shared Queues

---

From your Start button, launch **Printers and Faxes**, then launch the **Add Printer** wizard.

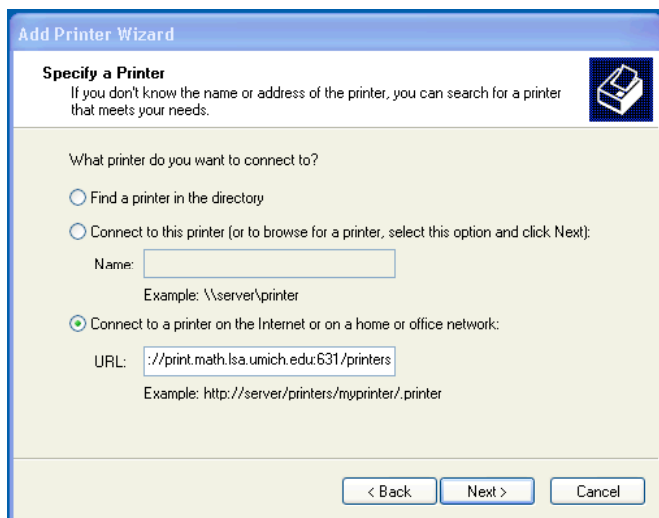


Press Next to start the wizard.



Choose to connect to a **Network printer** and press Next.

# Math-IT HOW-TO: Setting up Windows XP to print on Math Dept Shared Queues



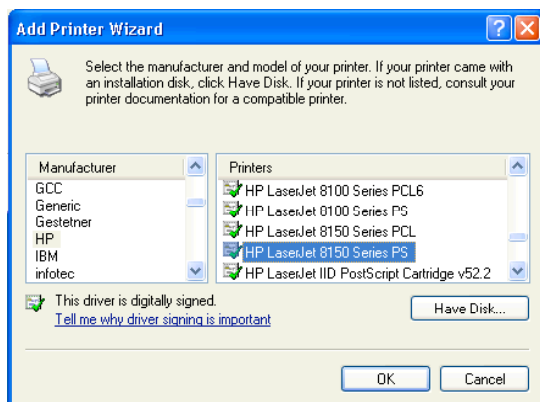
The URL for the lw3 queue would be:

`http://print.math.lsa.umich.edu:631/printers/lw3`

The floor printers are all named with lwN, where N is the floor you're on:

Floor printers: lw1, lw2, lw3, lw4, lw5

**IMPORTANT:** Look it over carefully to make sure that everything is right. If you get it wrong, it'll be very difficult to undo the changes that this wizard makes to your ports settings. Press Next only when you're sure you've done things correctly.



Choose the Driver to use. Most Mathematics Department floor printers are HP 8150's. We may have an 8100 around, so check before choosing. **Always** choose the PostScript (PS) version of the drivers!

After pressing OK, you'll be asked to choose whether you want it to be your default printer or not. Only you will know this answer.

After pressing Next, the wizard will give you a summary. Press OK to finish up. That's it!